

#### LEGEND:

- 2 Room
- 3 Room
- 4 Room
- 5 Room

- W1 - Full Height Window
- W2 - Three Quarter Height Window (approx. 600mm high parapet wall)
- BW - Bay Window (approx. 1000mm high parapet wall)
- BW1 - Three Quarter Height Bay Window (approx. 600mm high parapet wall)

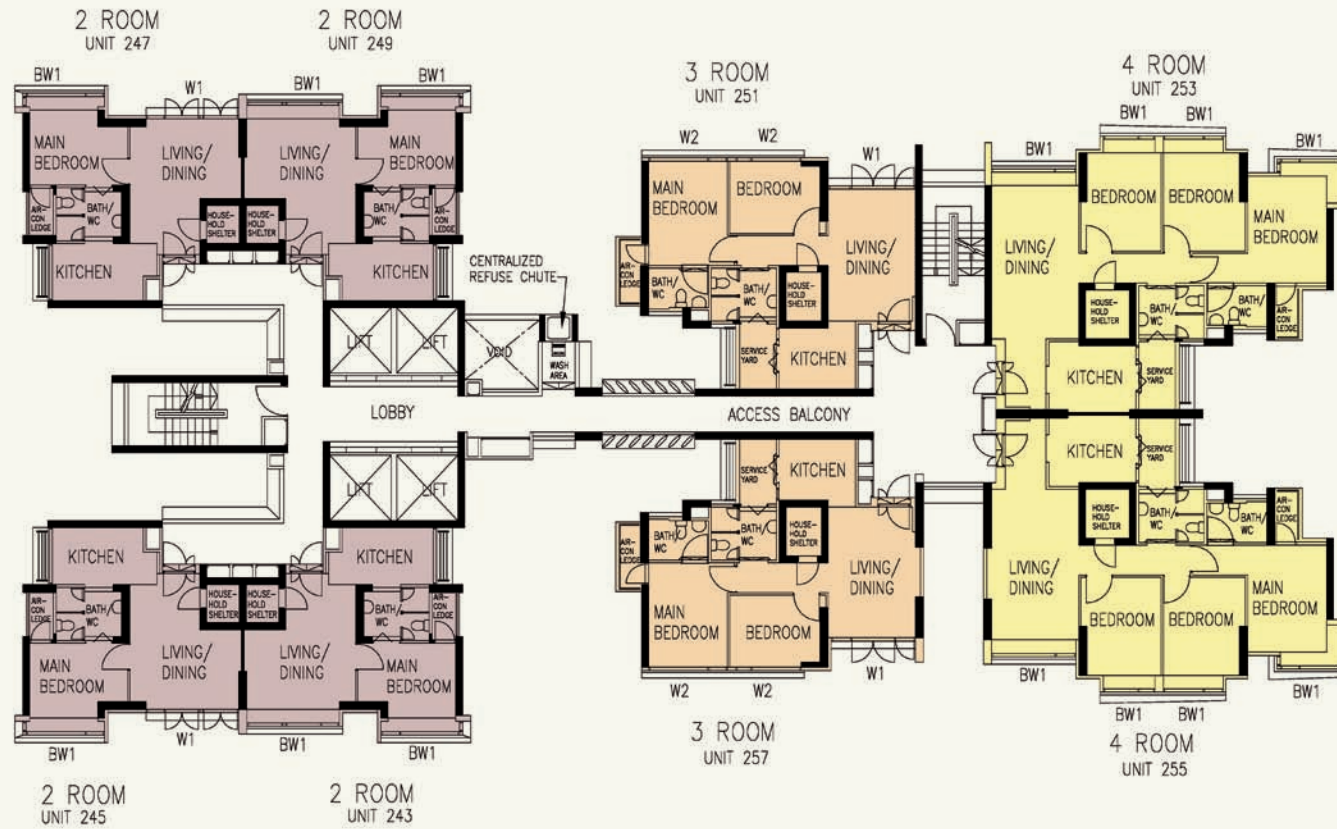
Unless otherwise indicated all windows will be standard height windows.

SCALE 0 2 4 6 8 10 METRES



## 4TH TO 5TH, 11TH TO 13TH, 19TH TO 21ST, 27TH & 28TH STOREY FLOOR PLAN BLOCK 418

*The coloured floor plan is not intended to demarcate the boundary of the flat.*



## LEGEND:

- 2 Room
- 3 Room
- 4 Room
- 5 Room

- W1 - Full Height Window
- W2 - Three Quarter Height Window (approx. 600mm high parapet wall)
- BW - Bay Window (approx. 1000mm high parapet wall)
- BW1 - Three Quarter Height Bay Window (approx. 600mm high parapet wall)

Unless otherwise indicated all windows will be standard height windows.

SCALE 0 2 4 6 8 10 METRES



## 6TH TO 10TH, 14TH TO 18TH & 22ND TO 26TH STOREY FLOOR PLAN BLOCK 418

*The coloured floor plan is not intended to demarcate the boundary of the flat.*